

Mator is combining comprehensive process knowledge and operational experience with expertise in state-of-the-art technologies to deliver best-for-purpose solutions

## Process lead in topside FEED study

Mator has recently been engaged as process lead and process partner in a topside FEED study (Front-End Engineering and Design) with the following scope of work:

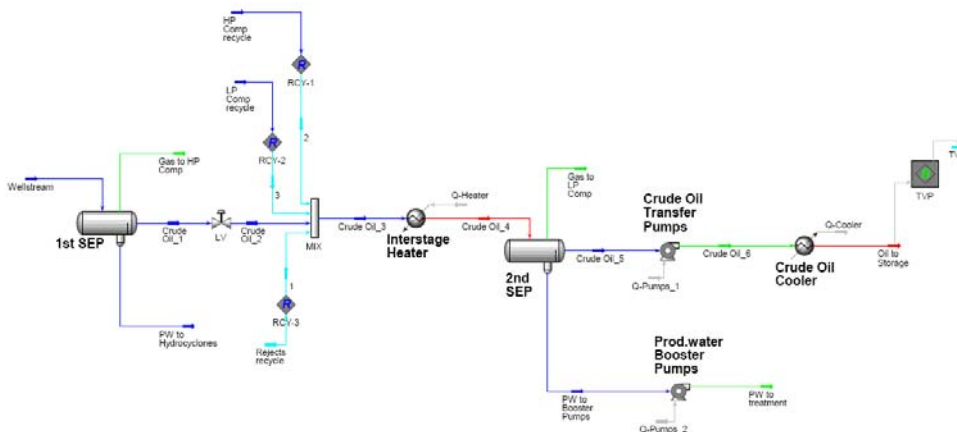
- Establish a process description and process design according to the Design Basis given by the client.
- Establish process flow diagrams with heat and mass balances and piping and instrument diagrams.
- Establish main equipment design data for inquiries and sizing.
- Process input to general layout of the process and utility modules.

Deliverables have been:

- Functional Description topside system
- Process Flow Diagrams (PFD)

- Heat and Mass balances
- Main equipment design specifications or data sheet.
- Line size report.
- Utility Consumption List and Line List.
- Piping and Instrument Diagrams (P&IDs) on main systems.
- Master Equipment List (MEL).
- Flare system philosophy.

The main reason for selecting Mator as process partner was our **comprehensive process knowledge in combination with operational experience**. This combination secures best-for-purpose technical solutions and design for optimal operation of the topside system.



### Recent Mator projects:

- ◆ **Teekay Petrojarl:** Process design for new field.
- ◆ **Statoil Snorre A:** Scanning of 3-phase separators and produced water optimization.
- ◆ **Statoil Veslefrikk:** Produced water optimization.
- ◆ **ConocoPhillips:** Eldfisk separation study and participating in test with electro-coalescence.
- ◆ **Statoil Gullfaks C:** Testing of acceptable sand rate for wells.